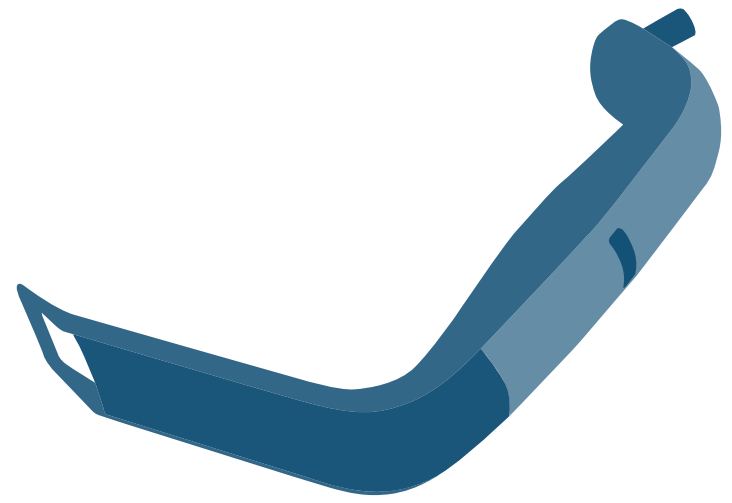


ONETRAC[®]

Single-Use Cordless Retractor with Integrated LED Light Source



ONETRAC[®] LX

Single-Use Cordless Retractor with Integrated Multi-LED Light Source



VISION

ONETRAC is the worlds first single-use cordless surgical retractor with integrated LED light source and smoke evacuation channel. Illumination in the depths of a surgical tissue pocket or cavity can now be met within seconds; NO assembly, additional parts/components, or fiber-optic cables required.

ONETRAC LX EXCLUSIVE FEATURES



Multiple lighting configurations allows surgeons to achieve ideal illumination coverage within pocket



Latest generation surface mounted LEDs are 5x brighter with wider coverage and precise color temperature



Light intensity adjustment dial allows user to set illumination strength to optimal levels



POWER

Each **ONETRAC** unit comes complete with a fully integrated LED light source. The **ONETRAC** light source, powered by alkaline button batteries, does not require a fiber-optic cord or any other additional parts, components, or assembly. **ONETRAC**'s LED light source produces NO damaging heat.

ONETRAC LX EXCLUSIVE FEATURES



3 hours of continuous use with all LED's activated and set to maximum illumination strength



Primary, non-rechargeable Lithium / manganese dioxide batteries



Battery activation tab reduces risk during shipping and facilitates hands-free battery removal



CONTROL

Each **ONETRAC** unit weighs less than 3 ounces. And because **ONETRAC** does not require the use of a fiber-optic cord, there is no added weight or limitation of movement or maneuverability.

ONETRAC LX EXCLUSIVE FEATURES



Color-coded size indicator allows user to easily identify and differentiate between blade sizes



Illumination control panel allows users to easily access and cycle through lighting configurations and illumination intensity



Ergonomically designed handle improves maneuverability during procedures