

# ONETRAC<sup>®</sup> LX

Single-Use Cordless Retractor with Integrated Multi-LED Light Source



**CORDLESS ILLUMINATION  
WITH INTEGRATED SMOKE  
EVACUATION**

Introducing **ONETRAC LX** a single-use, cordless surgical retractor with **integrated multi-LED light source and dual smoke evacuation channels**.

We designed this next generation ONETRAC device for surgeons performing demanding procedures requiring greater illumination strength, coverage, and duration.

**Illumination and smoke evacuation** in the depths of a surgical pocket can be met within seconds – no assembly, additional parts/components, or fiber-optic cables required.

To learn more visit [www.obpmedical.com/lx](http://www.obpmedical.com/lx)

## TO ORDER

EMAIL: [SALES@OBPMED.COM](mailto:SALES@OBPMED.COM)

CALL: 1-978-291-6853

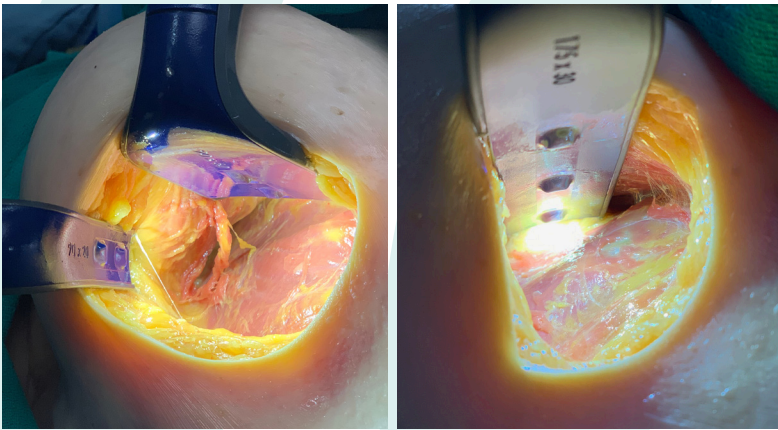
WEB: [OBPMEDICAL.COM](http://OBPMEDICAL.COM)

- Item # C100210 (135mm x 30mm)
- Item # C100220 (175mm x 30mm)
- Item # C100230 (90mm x 60mm)
- Item # C100240 (90mm x 20mm)
- Sold individually (1 EA/BX)
- Each unit comes packed sterile

## ILLUMINATE THE EVERYDAY

**obp** is the leading global developer of single-use, self-contained, illuminating medical devices. We integrate light with device — making them one — creating effective and simplified single-use solutions. Our innovative products are used in more than 13,000 physician offices, surgery centers and hospitals throughout the U.S., as well as healthcare facilities worldwide. **At obp, we illuminate the everyday.**

# CUT THE CORD



## PRODUCT FEATURES

- Disposable, single-use device reduces risk of cross-contamination
- Integrated cordless LED lights are cooler providing direct illumination and peak power for over 3 hours of continuous use
- On/off switch allows user to cycle through multiple lighting configurations
- Light intensity adjustment dial allows user to set illumination strength at optimal level
- Integrated dual smoke evacuation channels for rapid suction
- Color-coded size indicator allows user to easily identify and differentiate blade sizes
- Graded measurement markers on blade top to determine depth of surgical pocket
- Newly designed ergonomic handle for improved maneuverability
- Revolutionary reinforced nylon material provides exceptional strength and rigidity
- Atraumatic grip at distal end of blade to maximize tissue adherence
- Battery removal option

\*Patents-Pending

## GPO CONTRACTS

PREMIER CONTRACT PP-OR-1449

HEALTHTRUST CONTRACT 39624

ROI CONTRACT RMS02360



360 Merrimack Street Lawrence, MA 01843  
978.291.6853 | [www.obpmedical.com](http://www.obpmedical.com)

REV 010820